

# POLTRONA LISA / armchair

Design Marcello Ziliani



Seduta e schienale imbottiti con anima in multistrato curvato. Struttura a 4 gambe in acciaio tubolare  $\varnothing$  mm 16. La particolare conformazione dello schienale permette a Poltrona Lisa di essere appoggiata sul piano del tavolo per agevolare le operazioni di pulizia del pavimento. Impilabile. Per uso interno.

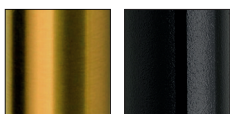
*Seat and back: upholstered. 4-leg frame in 16 mm diam. tubular steel. Thanks to its large and embracing backrest, you can lean armchair Lisa on the table. Stackable. For indoor use.*

## FINITURA TELAIO FRAME FINISHING



**CR**  
cromato  
chromed

**VA**  
verniciato  
antracite  
anthracite  
grey coated

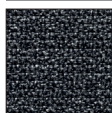


**OS**  
effetto ottone  
satinato  
satin  
brass effect

**NL**  
nichel nero  
lucido  
glossy black  
nikel

## TESSUTI E COLORI FABRICS AND COLOURS

### TESSUTO / FABRIC



**T3 25**  
grigio classico  
classic grey



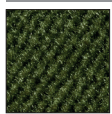
**T6 28**  
corda  
sand

### SIMILPELLE / SIMIL-LEATHER

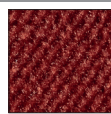


**EP 70**

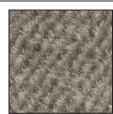
### VELLUTO / VELVET



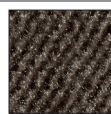
**V4 38**



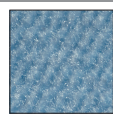
**V4 39**



**V4 40**

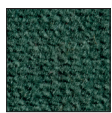


**V4 44**

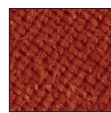


**V4 47**

### VELLUTO IGNIFUGO / FIRE RETARDANT VELVET



**V3 57**



**V3 58**



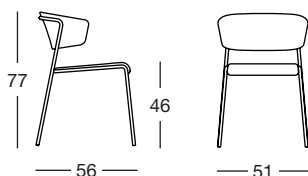
**V3 59**

### TESSUTO CLIENTE =

chiedere per minimo ordine.  
Alla sezione "tessuti" disponibili ulteriori finiture.  
Fattibilità da valutare.

### CUSTOMER OWN FABRIC =

ask for the minimum order quantity.  
All options available at "fabrics" section.  
Non-standard options to be verified.



Art. 2851

Imballo Packing	1 pezzo 1 piece
Peso unitario Unit weight	Kg 6,500
Misure imballo Packing sizes	57x54x81 cm

made in Italy

**SCAB DESIGN**  
since 1957

Sede/Headquarters: 25030 Coccaglio (BS) Italy - Via G. Monauni, 12  
Divisione Commerciale Italia: Tel. 0307718.755 - italia@scab.it  
Export Department: Phone +390307718.715 - export@scabitaly.com  
[www.scabdesign.it](http://www.scabdesign.it)